

<h1 style="text-align: center;">Technical Description</h1> <h2 style="text-align: center;">Grinding plant equipment</h2>		 CHRISTIAN PFEIFFER	
		Bearbeiter:	D. Schönegger
Project:	201060106 Grinding plant equipment - MINREF	Datum	16.04.2021
		Revision:	00
		Page:	6 / 10

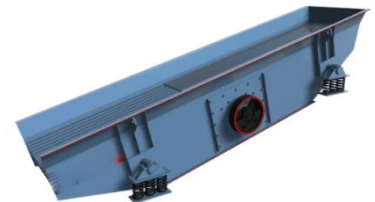
2.6 Overbelt magnet (3.4.3)

For removing of magnetic particles in the material feed conveyor to the pebble crusher



2.7 Vibrating feeder (3.4.6)

Vibrating feeder, V-belts, 15kW WEG electric motor, springs with seating, other fixing items.



2.8 Pebble crusher (3.4.7)

When hydraulic cone crusher is operated, the powerful motor drives the shaft. Then the shaft will force the axle of crushing cone wings to swing and the crushing wall will move against each other. Finally, the materials will be pressed and crushed, and then drop through the discharge opening in requested sizes.

When some foreign matters that cannot be crushed go into the hydraulic cone crusher or the crusher is overloaded, the hydraulic protection system will increase the discharging opening and then the foreign matters will be discharged from the crushing chamber. Hydraulic and lubrication control system, which ensures the dual protection of the bearing lubrication and overload protection.



Basic crusher, motor support and 315kW WEG electric motor with anchoring fixing, V-belts for drive, soft starter and control cabinet with key Schneider electrics, Improved Mn18Cr2 liners, lubrication station with hosing.

More than just grinding and separation: **EFFICIENT PROCESSES**

Christian Pfeiffer
Maschinenfabrik GmbH

Headquarters
 Sudhoferweg 110-112
 59269 Beckum, Deutschland
 Tel. +49 2521 849-0
 Fax +49 2521 849-123

Branch office Liezen
 Werkstraße 5
 8940 Liezen, Österreich
 Tel. +43 3612 270-4101
 Fax +43 3612 270-4118

Managing Directors
 Dipl.-Ing. Uwe Karsunke
 Ing. Dietmar Freyhammer

Procurement
 Dipl.-Ing. Tim Nowack
 Frank Klapper
 Sitz der Gesellschaft: Beckum
 HRB 7270, Amtsgericht Münster

christianpfeiffer.com

office.de@christianpfeiffer.com
 Ust-IdNr. DE 812 118 576

office.at@christianpfeiffer.com
 FN 373934d, ATU 636 35 828